

Newsletter

A Message from the President

During the holiday season, we are reminded of those for whom we are thankful. I am especially thankful for our 182 Friends members, our Friends board of directors and our Park Staff. Each plays a different role in promoting preserving and protecting the wonderful natural resources we call Jonathan Dickinson State Park. While Park Staff are critical to successful park operation and management, they could not reach as many park visitors or provide the wide range of programs at JDSP without dedicated volunteers. At the Friends of Florida State Parks Citizens Support Organization workshop in early December, we learned that the national average value of a volunteer hour is \$18. Many of the JDSP Volunteers have contributed over 1000 hours of service and a few have several times that amount. What dedicated support for our park!

Each Friend can contribute time and energy to JDSP. At Fire Fest 2010, we needed volunteers to assist with the event so

Past President Magrogan sent out the e-mail call for help. Over 2300 Fire Fest visitors enjoyed an evening at the park with family and friends. I want to recognize especially and thank the Ridgeway family Friends members for their Fire Fest participation and service to the Friends and the Park. Jeff, Lisa and Delaney served at the Friends booth assisting visitors from before event set-up through event clean-up. This type of dedicated volunteer support is what Friends is all about. I encourage each of us to volunteer and participate in at least two of our Friends events during the coming year. Your participation will not only improve our events, it will strengthen our organization and help us achieve our goals.

The Board of Directors and I wish you *Happy Holidays* and a prosperous and successful year in 2011.

Dave Nickerson, President

Friends of Jonathan Dickinson State Park, Inc.

BioLogist's Corner

By Rob Rossmann, JDSP Park Biologist

Name: Zebra Swallowtail
Genus/Species: *Eurytides marcellus*
Family: Papilionidae (Swallowtails)
Can be found at JDSP: Both in the scrub and pine flatwoods, where its caterpillar food, paw paw (*Asimina* sp.), is found. Zebra Swallowtail caterpillars feed on both reticulate paw paw (*Asimina reticulata*) and the endangered four-petaled paw paw (*Asimina tetramera*). In the butterfly stage this animal primarily feeds on nectar from flowers that it extracts with its tongue.
What it looks like: The Zebra Swallowtail is a medium-sized butterfly (wingspan is 2.5 to 3.5 inches) that is white, bluish-white or greenish-white with black strips and has extremely long tails. The undersides has red spots in the hind wing.
Status: This butterfly is commonly seen in the scrub and pine flatwoods of Florida.
Range: Found in the eastern United States but fairly rare in the north-eastern U. S.
Interesting Facts:

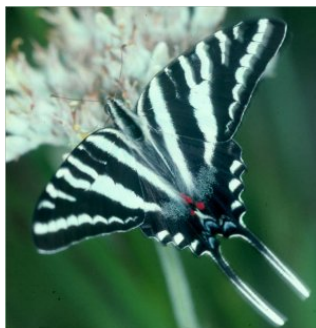


Photo of Zebra Swallowtail taken by Alana Edwards

- The tails on this swallowtail are longer than any other North American butterfly. The Zebra Swallowtail has several broods (groups of butterflies hatched at or about the same time) per year. Throughout the year, each brood's tails become increasingly longer, with the tails being longest in the fall brood.

INSIDE THIS ISSUE

A Message from the President...1
 Biologist's Corner.....1
 Creepy Loxahatchee River.....2
 Hank Smith Award.....2
 Membership.....3
 Scouts at Camp Tanah Keeta...4
 Volunteers Needed!.....4
 Volunteers Spotlight.....5
 LEACH!.....5
 Astronomy 101 & Stargazing....6
 Park Activities.....6

**Friends of
Jonathan Dickinson
State Park, Inc.**

Executive Committee

Dave Nickerson, *President*
Michael Pat Gostel,
Vice President
Lois Brenner-Nickerson,
Secretary
Joanne Talley, *Treasurer*

Board Members

Henry Blakiston
Anne Cox
Alana Edwards
Patrick Hayes
Randy Hoefling
Pat Jebb
Patricia Magrogan
Ronald Orr
Jim Snyder
Mason Walsh

Club Scrub Liaison

Bill Meyers, *President*

**Jonathan Dickinson
State Park Staff**

Mark Nelson, *Park
Manager*
Thomas Brown, *Asst. Park
Manager*
Martin Morse, *Park
Services Specialist*
Libby Reinert, *Park
Services Specialist*
Rich Hauck, *Park
Services Specialist*
Scott Tedford,
Park Services Specialist
Janet LaMont, *Admin.
Assistant*
Garlene Bosley, *Secretary*
Sandra Lovelady, *Secretary*
Rob Rossmannith,
Park Biologist
Erinn Mullen, *AmeriCorps
Park Rangers*
Robert Alonzo
Christina Martinez
James Moye
Keith Peterson
Barry Richardson
Bob Schuh
Jane Shauan
Pat Walsh
Cheri Wells

Wild and Creepy Loxahatchee River

On October 23rd, Jonathan Dickinson had its fourth FireFest event, complete with a Haunted River Trail where campers turned into Zombies and had a cannibal picnic! In the Firefighter Relay the Jonathan Dickinson Fire Team beat the Division of Forestry Team and won back the coveted Golden Shovel. Visitors could hop on a hayride through the quite wilderness of the park, and younger kids enjoyed a maze inside the Kimbell Center and made spiders and bats to decorate the "Wild and Creepy Loxahatchee River" displays. The final count of visitors in the park for FireFest was a staggering 2,534. We would like to especially thank all volunteers and AmeriCorps members who helped make this a fun, safe, and successful event!



JDSP's Fire Team battles the Division of Forestry and win the gold shovel in the Firefighter Relay.



A ghost hangs from the branch of a charred Slash Pine on the Haunted River Trail. Photos by Art Dodd.

Florida Park Service Hank Smith Award for Excellence in Research

Richards E. Roberts

Dick Roberts was presented this first state-wide annual award "for conducting and completing research that provided informed direction to improve the natural resource management program of the Florida Park Service". He was the Park Service's first District Biologist for the southeast region and then the first Park Biologist for Jonathan Dickinson State Park. During his 35 years with the agency and now 5 years as a volunteer, he has published over 60 peer reviewed scientific articles, many on the protection, management and research on the Loxahatchee National Wild and Scenic River.



NEW BRICK POLICY Bricks are available again! Bricks will be installed in batches, *four times a year*. So get your order in today!

YOUR INFORMATION:

Name: _____
 Address: _____
 City: _____ State: _____ Zip: _____
 Day Phone: _____ Evening Phone: _____
 Fax: _____ Email: _____
 Signature: _____ Date: _____



Three lines, 20 characters per line, spaces and punctuation count.

1st Line (20) _____
 2nd Line (20) _____
 3rd Line (20) _____

CHECK ENCLOSED: ()

Holiday Gift ideas!

The holidays are just around the corner. Give a gift that will be a lasting legacy. Buy a brick to celebrate an occasion or to commemorate a loved one.

A membership to the Friends is another great gift. You will be supporting a great organization and your friends will be thrilled with the 12 free visits to the park!

New Friends

- Cheryl & Tim Barrett
- Larry Cantrell
- Susan Clark
- Jennifer & Buddy Ferrari
- Donna Goodwin & Brian Elam
- Sonja Gray
- Mark & Joyce Halloran
- Arthur Hochberg
- William & Catherine Madden
- Mary Anne McMillin
- Judy & Kent Mergler
- Bill Meyers
- Paula & Vincent Pappalardo
- Rosemary Sell
- Lillian Silva
- Chris & Dianna Teeters
- Tamara Wagner

MEMBERSHIP UPDATE

Friends Renewed

- Mary Ann Beyer
- Carolyn Brawley
- Michael Brill
- Anne Cox
- Paul & Sherry Cummings
- Michael Danford
- Constance Davis
- Alana Edwards & Rick Nevalis
- Sheldon & Naomi Gawiser
- Tom & Mary Ann Grieser
- Jack & Liz Hailman
- Floyd & Gail Hodge
- Jill Johnson

- Steven Karsh
- Winnie Lo
- Pat & Dick Manseau
- Charles & Sara McCarthy
- Kathryn Miller
- Frances & Michael O'Brien
- Linda O'Loughlin
- Tom & Sandra Price
- Anthony Rawson
- Edward & Joan Riordan
- John & Judy Wakeman
- Shirley Willis
- Thomas & Blanche Winton
- James Wright



Friends of Jonathan Dickinson State Park, Inc.

Membership Application

A not-for-profit Citizen Support Organization (CSO)

- Lifetime Corporate: \$2500
- Lifetime Patron: \$1000
- Corporate: \$500
- Patron: \$100
- Organization: \$50
- Family: \$30

Name: _____
 Address: _____
 City: _____ State: _____ ZIP: _____
 Email: _____ Phone: _____

I am interested in volunteering with the Friends.

Please send this application along with your donation to:

The Friends of Jonathan Dickinson State Park, Inc.
 16450 SE Federal Hwy, Hobe Sound, FL 33455

For more information on the "Friends" please call (561) 744-9814

A copy of the official registration and financial information of the "Friends" may be obtained from The Division of Consumer Services by calling 800-435-7352

A Weekend at Camp Tanah Keeta

By Dr. Charles Roberts

One of Scoutings biggest events occurred in November, where Cub Scout Pack 123 and many others came together with Boy Scout troops to work on Webelo activities and Merit Badges. Two nights of camping in the scrubby flatwoods along the Loxahatchee river, the boys participated in numerous science related activities including soil core sampling (see photo). Between activities, the boys explored the woods, marveling at the variety of plants and insects. Many parents fondly recalled their days at Tanah Keeta as cub scouts in the 1970's when conditions were very primitive. During the scout activities, parents could attend adult education in scouting activities ranging from the history of scouting, teaching map interpretation, to first aid training. The event is designed to help cub scouts and cub scout leaders make the transition into boy scouts.

Dr. Roberts is Associate Professor for the Department of Geosciences at Florida Atlantic University.



Boy scout add core sample to sorting bucket

<p>Available Now! A Visitor's Guide to Jonathan Dickinson State Park Only \$9.95 Pick up your copy today at the River Store</p>		<p>This 96-page, four-color booklet with 12 maps and 173 photos has sections on:</p> <ul style="list-style-type: none"> • Plants, trees and animals in the park. • The park's eight major ecological systems. • Activities for visitors – including neighboring sites. • Stories of Camp Murphy, Trapper Nelson & other highlights of our 5,000-plus years of human habitation.
--	--	---

Volunteer Opportunities – HELP NEEDED

We are currently defining areas where members of *Friends of JDSP* who wish to volunteer can help. Please identify where you can assist the *Friends* by calling Libby at the Ed Center at 561-745-5551. If you can help with something that you don't see listed here, please let us know. Your comments are welcome.

Ways you can help the *Friends*:

- Man table at events in park
- Help at socials
- Help with phone calls – for members without email
- Distributing membership forms – libraries, _____ (other?)
- Help with mailings
- Accounting help
- Other _____

Education center volunteers can help with:

- Greeting visitors at the reception desk
- Maintaining program and activity supplies and materials
- Maintaining exhibits and displays
- Leading school and visitor programs and activities
- Coordinating special events



Also, please tell your friends or neighbors that might be interested in helping about the opportunities at JDSP. We look forward to hearing from you with any questions or comments and appreciate your involvement. **Thank you for being a *Friend!***



VOLUNTEER SPOTLIGHT

Erinn sending picture later today!!

Larry and Peggy Reed are residential volunteers at Jonathan Dickinson State Park. Since 2007 they have been hauling their RV 1100 miles from Massillon, Ohio to the park in Hobe Sound. It takes them about three days to get here and they do a variety of things to help out. Peggy works in the ranger station while Larry does park maintenance, many times both of them come into the Kimbell Center and clean, greet visitors, or input data. They are also interested in learning to bathe and feed our two snakes. In March they head back to Ohio but this time it takes them five to six week to return because they explore the countryside visiting parts of Florida, Georgia, Alabama, Tennessee, and Kentucky. They have also been campground hosts in state parks in Maryland, Oregon, California, and Texas. Thank you to Larry and Peggy for their dedication to the Florida Park Service and Jonathan Dickinson State Park!



LEACH!

By Ken Kandefer

On November 13th, over 250 runners and adventure racers assembled at the ole swimmin' hole picnic area for a full day of racing and exploring J.D.S.P. in the annual event put on by Club Scrub. At 8am, the first teams of racers started The Leach with topographic maps in hand for 8 hours of trekking, mountain biking and paddling around the park. Next, at 8:30am, began The Tick where 40+ trail runners ran a 4 mile loop on paved and unpaved multi-purpose trails. Finally at 1pm, the third race, The Lil' Bleeder, gave less serious competitors a chance to adventure race for 2-3 hours on a well marked yet still challenging course. It was a perfect November day and we had a remarkable turnout this year. As usual, our core members of Club Scrub came together to put on another successful race, as this race has become the most popular adventure racing event in South Florida. Also, thank you to the Friends members who came out to show their support for this event.

Ken is Vice President of Club Scrub. For more information about Club Scrub, go to www.clubscrub.org.



Join us on Saturday, **December 18, 2010** from **6—8pm** for

Astronomy 101 & Stargazing



What is a lunar eclipse and how often do they occur? Learn these answers and more in preparation for the total lunar eclipse taking place on December 21st. **Registration is required**, please call the Kimbell Center for more information: 561-745-5551.

Hope to see you there!

Scheduled Activities at the Park

Family Adventures in the Park—Offered every Saturday (times vary), these programs are full of fun and adventure for the whole family. Topics vary, so please call ahead for current information and registration (at least 2 days in advance preferred), 561-745-5551.

Saturday Afternoon Program—Take a break from your outdoor adventures in the park and join us in the Kimbell Center for an afternoon learning adventure! Saturdays, 2:00 – 3:30 p.m., topics vary – please call the Kimbell Center for more information, 561-745-5551.

Hike with a Ranger—Every Sunday morning JDSP offers a hike with a Ranger. Check for location at the Ranger Station. Hikes begin at 9:00 am. No reservation necessary.

Loxahatchee River Adventures

Spend a couple of hours sightseeing on the Wild and Scenic Loxahatchee River. Board the Loxahatchee Queen at the concessions area. Pontoon tours depart the boat dock daily at 9:00 and 11:00 a.m., 1:00 and 3:00 p.m. Cost for the tour: Adults - \$23.47, Children (6-12) - \$15.49 and Children under 6 are free.



The Friends of Jonathan Dickinson State Park, Inc.
16450 SE Federal Hwy
Hobe Sound, FL 33455

The Friends of Jonathan Dickinson State Park, Inc. is a volunteer-based, non-profit organization whose role is one of advocacy for the historical, educational and ecological enhancement of Jonathan Dickinson State Park. Its mission is to assist park management in meeting the natural and cultural resource management objectives established for the park.

We are on the web at:
www.friendsofjdsp.org