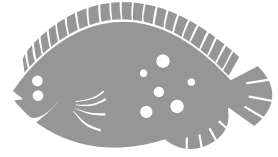


Jonathan Dickinson State Park Animal Species List



BRACKISH / MARINE FISH

anchovies, sardines

anchovies

bay anchovy (*Anchoa mitchilli*)

sardines

gizzard shad (*Dorosoma cepedianum*)

catfish

armored catfish

sailfin catfish*

(*Pterygoplichthys multiradiatus*)

sea catfish

gafftopsail catfish (*Bagre marinus*)

hardhead catfish (*Ariopsis felis*)

eels

freshwater eels

American eel (*Anguilla rostrata*)

snake eels

speckled worm eel (*Myrophis punctatus*)

whip eel (*Bascanichthys scuticaris*)

flatfish

American soles

lined sole (*Achirus lineatus*)

sand flounders

bay whiff (*Citharichthys spilopterus*)

Southern flounder

(*Paralichthys lethostigma*)

spotted whiff (*Citharichthys macrops*)

killifish, livebearers, toothcarps

killifish

marsh killifish (*Fundulus confluentus*)

livebearers

sailfin molly (*Poecilia latipinna*)

Western mosquitofish (*Gambusia affinis*)

toothcarps

sheepshead minnow

(*Cyprinodon variegatus*)

mullet

gray mullets

mountain mullet (*Agonostomus monticola*)

striped mullet (*Mugil cephalus*)

white mullet (*Mugil curema*)

needlefish

needlefish

Atlantic needlefish (*Strongylura marina*)

redfin needlefish (*Strongylura notata*)

perch-like fish

barracuda

great barracuda (*Sphyraena barracuda*)

cichlids

spotted tilapia* (*Tilapia mariae*)

croakers, drums

Atlantic croaker (*Micropogonias undulatus*)

red drum (*Sciaenops ocellatus*)

silver perch (*Bairdiella chrysoura*)

spotted seatrout (*Cynoscion nebulosus*)

gobies

clown goby (*Microgobius gulosus*)

crested goby (*Lophogobius cyprinoides*)

darter goby (*Ctenogobius boleosoma*)

frillfin goby (*Bathygobius soporator*)

highfin goby (*Gobionellus oceanicus*)

lyre goby (*Evorthodus lyricus*)

naked goby (*Gobiosoma bosc*)

river goby (*Awaous banana*)

sharptail goby (*Gobionellus hastatus*)

grunts

burro grunt (*Pomadasys crocro*)

pigfish (*Orthopristis chrysoptera*)

mojarras

Irish pompano (*Diapterus auratus*)

mottled mojarra (*Eucinostomus lefroyi*)

silver jenny (*Eucinostomus gula*)

spotfin mojarra (*Eucinostomus argenteus*)

striped mojarra (*Eugerres plumieri*)

pompanos, jacks

crevalle jack (*Caranx hippos*)

*indicates nonnative species

BRACKISH / MARINE FISH (cont'd)

perch-like fish (cont'd)

porgies

pinfish (*Lagodon rhomboides*)

sheepshead (*Archosargus probatocephalus*)

sleepers

bigmouth sleeper (*Gobiomorus dormitor*)

fat sleeper (*Dormitator maculatus*)

largescale spinycheek sleeper

(*Eleotris amblyopsis*)

spinycheek sleeper (*Eleotris pisonis*)

snappers

dog snapper (*Lutjanus jocu*)

gray snapper (*Lutjanus griseus*)

snooks

common snook (*Centropomus undecimalis*)

largescale fat snook (*Centropomus mexicanus*)

smallscale fat snook (*Centropomus parallelus*)

swordspine snook (*Centropomus ensiferus*)

tarpon snook (*Centropomus pectinatus*)

pipefish

pipefish

gulf pipefish (*Syngnathus scovelli*)

opossum pipefish (*Microphis brachyurus*)

silversides

new world silversides

tidewater silverside (*Menidia beryllina*)

stingrays

whip-tail stingrays

Atlantic stingray (*Dasyatis sabina*)

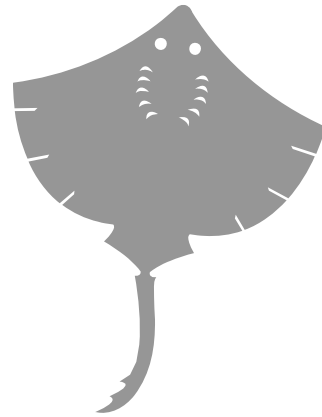
tarpon, ladyfish

ladyfish

ladyfish (*Elops saurus*)

tarpon

tarpon (*Megalops atlanticus*)



FRESHWATER FISH

bowfins

bowfins

bowfin (*Amia calva*)

catfish

air-breathing catfish

walking catfish* (*Clarias batrachus*)

armored catfish

brown hoplo* (*Hoplosternum littorale*)

freshwater catfish

brown bullhead (*Ameiurus nebulosus*)

tadpole madtom (*Noturus gyrinus*)

yellow bullhead (*Ameiurus natalis*)

eels

freshwater eels

American eel (*Anguilla rostrata*)

gars

gars

Florida gar

(*Lepisosteus platyrhincus*)

long-nosed gar (*Lepisosteus osseus*)

killifish, livebearers, toothcarps

killifish

banded topminnow (*Fundulus cingulatus*)

bluefin killifish (*Lucania goodei*)

golden topminnow (*Fundulus chrysotus*)

lined topminnow (*Fundulus lineolatus*)

pygmy killifish (*Leptolucania ommata*)

Seminole killifish (*Fundulus seminolis*)

livebearers

least killifish (*Heterandria formosa*)

sailfin molly (*Poecilia latipinna*)

Western mosquitofish (*Gambusia affinis*)

tooth carps

flagfish (*Jordanella floridae*)

minnows, suckers

minnows

coastal shiner (*Notropis petersoni*)

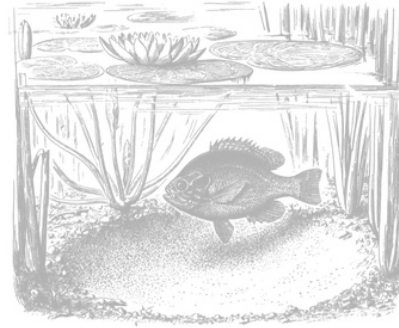
grass carp* (*Ctenopharyngodon idella*)

ironcolor shiner (*Notropis chalybaeus*)

taillight shiner (*Notropis maculatus*)

suckers

lake chubsucker (*Erimyzon sucetta*)



perch-like fish

cichlids

black acara* (*Cichlasoma bimaculatum*)

spotted tilapia* (*Tilapia mariae*)

perches

swamp darter (*Etheostoma fusiforme*)

pygmy sunfish

Everglades pygmy sunfish

(*Elassoma evergladei*)

sleepers

fat sleeper (*Dormitator maculatus*)

sunfish

black crappie (*Pomoxis nigromaculatus*)

bluegill (*Lepomis macrochirus*)

bluespotted sunfish

(*Enneacanthus gloriosus*)

dollar sunfish (*Lepomis marginatus*)

largemouth bass (*Micropterus salmoides*)

redeer sunfish (*Lepomis microlophus*)

spotted sunfish (*Lepomis punctatus*)

warmouth (*Chaenobryttus gulosus*)

sardines

sardines

gizzard shad (*Dorosoma cepedianum*)

silversides

silversides

brook silverside (*Labidesthes sicculus*)

tidewater silverside (*Menidia beryllina*)

*indicates nonnative species



REPTILES

SNAKES AND LIZARDS



coral snakes

Eastern coral snake (*Micrurus fulvius*)

pit vipers

dusky pygmy rattlesnake

(*Sistrurus miliarius barbouri*)

Eastern diamondback rattlesnake

(*Crotalus adamanteus*)

Florida cottonmouth

(*Agkistrodon piscivorus conanti*)

typical snakes

coastal dunes crowned snake

(*Tantilla relicta pamlica*)

corn snake (*Elaphe guttata guttata*)

Eastern coachwhip

(*Masticophis flagellum flagellum*)

Eastern garter snake

(*Thamnophis sirtalis sirtalis*)

Eastern hognose snake

(*Heterodon platirhinos*)

Eastern indigo snake

(*Drymarchon corais couperi*)

Eastern mud snake

(*Francis abacura abacura*)

Florida green water snake

(*Nerodia floridana*)

Florida pine snake

(*Pituophis melanoleucus mugitus*)

Florida scarlet snake

(*Cemophora coccinea coccinea*)

Florida water snake

(*Nerodia fasciata pictiventris*)

peninsula ribbon snake

(*Thamnophis sauritus sackeri*)

pine woods snake (*Rhadinaea flavilata*)

rough green snake (*Opheodrys aestivus*)

scarlet kingsnake

(*Lampropeltis triangulum elapsoides*)

South Florida swamp snake

(*Seminatrix pygaea cyclas*)

Southern black racer

(*Coluber constrictor priapus*)

Southern ringneck snake

(*Diadophis punctatus punctatus*)

striped crayfish snake (*Regina alleni*)

yellow rat snake

(*Elaphe alleghaniensis*)

geckos

geckos

Indo-Pacific gecko*

(*Hemidactylus garnotii*)

tropical house gecko*

(*Hemidactylus mabouia*)

glass lizards, racerunners, skinks

glass lizards

island glass lizard

(*Ophisaurus compressus*)

racerunners

six-lined racerunner (*Cnemidophorus*

sexlineatus sexlineatus)

skinks

ground skink (*Scincella lateralis*)

peninsula mole skink

(*Eumeces egregius onocrepis*)

Southeastern five-lined skink

(*Eumeces inexpectatus*)

iguanas, lizards

anole lizards

Cuban brown anole* (*Norops sagrei*)

green anole (*Anolis carolinensis*)

iguanas

green iguana* (*Iguana iguana*)

neotropical ground lizards

Northern curly-tailed lizard*

(*Leiocephalus carinatus armouri*)

spiny lizards

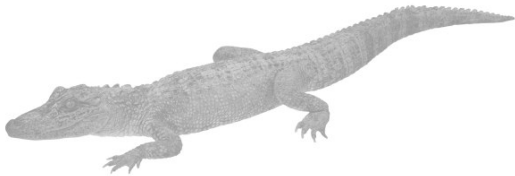
Florida scrub lizard (*Sceloporus woodi*)

*indicates nonnative species

REPTILES

ALLIGATORS

American alligator
(*Alligator mississippiensis*)



TURTLES, TORTOISES

mud turtles

Florida mud turtle
(*Kinosternon subrubrum steindachneri*)

pond turtles

Florida box turtle
(*Terrapene carolina bauri*)

Florida redbelly cooter
(*Pseudemys nelsoni*)

peninsula cooter
(*Pseudemys concinna floridana*)

snapping turtles

Florida snapping turtle
(*Chelydra serpentina osceola*)

softshell turtles

Florida softshell (*Apalone ferox*)

tortoises

gopher tortoise (*Gopherus polyphemus*)



AMPHIBIANS

AMPHUIMAS, SALAMANDERS, SIRENS

amphuimas

two-toed amphiuma
(*Amphiuma means*)

newts, salamanders

peninsula newt
(*Notophthalmus viridescens piaropicola*)

sirens

Eastern lesser siren
(*Siren intermedia intermedia*)



FROGS, TOADS

narrowmouth frogs

narrowmouth toad
(*Gastrophryne carolinensis*)

neotropical frogs

greenhouse frog
(*Eleutherodactylus planirostris*)

spadefoots

Eastern spadefoot toad
(*Scaphiopus holbrookii*)

toads

giant toad* (*Bufo marinus*)
oak toad (*Bufo quercicus*)
Southern toad (*Bufo terrestris*)

treefrogs

barking treefrog (*Hyla gratiosa*)
Cuban treefrog
(*Osteopilus septentrionalis*)
Florida chorus frog *Pseudacris nigrita*
Florida cricket frog (*Acris gryllus dorsalis*)
green treefrog (*Hyla cinerea*)
little grass frog (*Pseudacris ocularis*)
pine woods treefrog (*Hyla femoralis*)
squirrel treefrog (*Hyla squirella*)

true frogs

Florida leopard frog
(*Rana sphenoccephala sphenoccephala*)
gopher frog (*Rana capito aesopus*)
pig frog (*Rana grylio*)



*indicates nonnative species

MAMMALS

American marsupials

Virginia opossum (*Didelphis marsupialis*)

armadillos

nine-banded armadillo*
(*Dasypus novemcinctus mexicanus*)

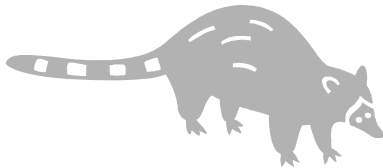
bats

Brazilian free-tailed bat
(*Tadarida brasiliensis*)
Eastern pipistrelle (*Pipistrellus subflavus*)
evening bat (*Nycticeius humeralis*)
Northern yellow bat (*Lasiurus intermedius*)
Seminole bat (*Lasiurus seminolus*)



carnivores

bobcat (*Lynx rufus floridanus*)
coyote (*Canis latrans*)
domestic dog* (*Canis lupus familiaris*)
Eastern spotted skunk
(*Spilogale putorius putorius*)
gray fox
(*Urocyon cinereoargenteus floridanus*)
house cat* (*Felis catus*)
raccoon (*Procyon lotor elucus*)
river otter (*Lontra canadensis*)

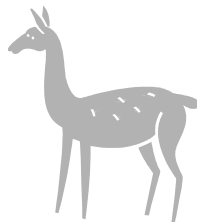


dolphins

bottle-nosed dolphin (*Tursiops truncatus*)

hoofed animals

white-tailed deer
(*Odocoileus virginianus seminolus*)
wild pig* (*Sus scrofa*)



insectivores

Eastern mole (*Scalopus aquaticus howelli*)
short-tailed shrew (*Blarina brevicauda*)

manatees

Florida manatee
(*Trichechus manatus latirostris*)

rabbits

Eastern cottontail
(*Sylvilagus floridanus floridanus*)
marsh rabbit
(*Sylvilagus palustris paludicola*)

rodents

cotton mouse (*Peromyscus gossypinus*)
Eastern gray squirrel (*Sciurus carolinensis*)
Florida mouse (*Peromyscus floridanus*)
hispid cotton rat (*Sigmodon hispidus*)
house mouse* (*Mus musculus*)
rice rat (*Oryzomys palustris natator*)
Southern flying squirrel (*Glaucomys volans*)



*indicates nonnative species